



MEDICATION MANAGEMENT PHARMACY

PRESCRIPTION MEDICATION

Is A Patient's Biggest Responsibility

Up to 30% of prescriptions are never filled.

Over 50% of medications are not taken as prescribed.

In the Medicare Population:

- 81% have 2+ chronic conditions.
- Over 70% are non-adherent to their medication
- 1 in 5 are readmitted within 30 days – half of them are considered to be non-adherent.

The chronically ill and aging are overwhelmed with their pharmacy care.



THESE GAPS HAVE RIPPLING EFFECTS



Hospitals:

Up to 10% of admissions are considered preventable due to non-adherence.



Primary Care Physicians:

Limited physicians and time to consult patients or provide team-based care, resulting in poor communication between in-patient and out-patient teams.



Acute-Care Facilities:

A revolving door plagued with readmissions.



Payors:

Struggle to find the members who need help, few who are found continue with care.



In-Home Providers:

The pieces of the continuum of care puzzle are left to social workers, aids, nurses, and case managers who are forced into making ill-informed care decisions.



While this goes on,

the patient continues a non-adherent path, while caregivers become just as overwhelmed.

WHAT IF A PHARMACY FOUND A WAY TO CLOSE THOSE GAPS?



Patients know that medicines keep them alive.

4 out of 5

patients state that they would skip their PCP appointment over picking up their medications.



Centennial Pharmacy Services utilizes an accessible, clinically-based workflow for patients and health teams, proving that pharmacy care is the key to patient success.

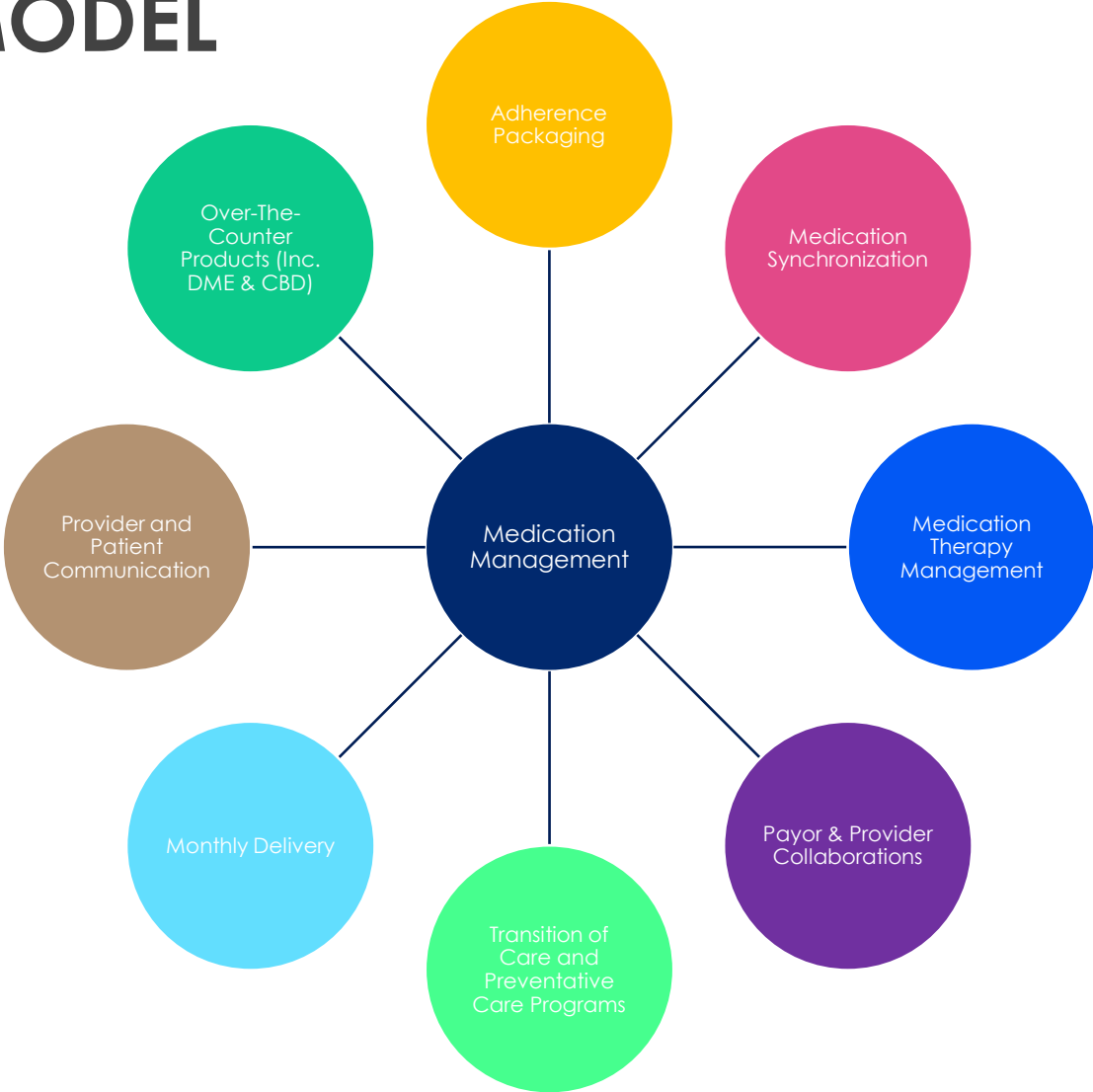
Essential Functions of the Centennial platform:

- Clinical pharmacy initiatives
- Clinical pharmacist support
- Improved dispensing systems
- Coordination of care
- Proprietary management systems

THE CENTENNIALCARE® MODEL

This service model provides Centennial's patients, providers and partners with comprehensive and effective medication management.

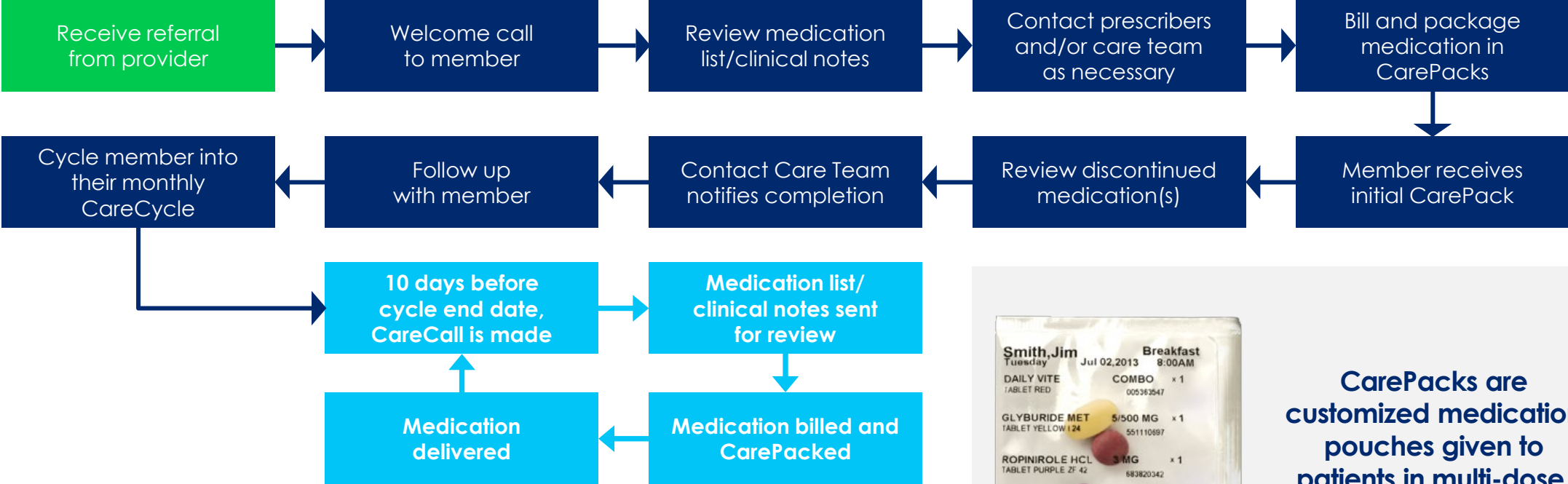
- ✓ Enables Centennial to maximize and diversify pharmacy services
- ✓ Creates higher outcomes and cost savings for partners
- ✓ Provides patients with easy, accessible, and affordable pharmacy care



THE PROCESS

- Medication interactions
- Drug utilization
- Regimen optimization
- Brand/Generic ratio
- Insurance/Copayment assistance
- Polypharmacy issues

Member has medication change or hospitalization



CarePacks are customized medication pouches given to patients in multi-dose, time-stamped packages.

THE EXPERIENCE



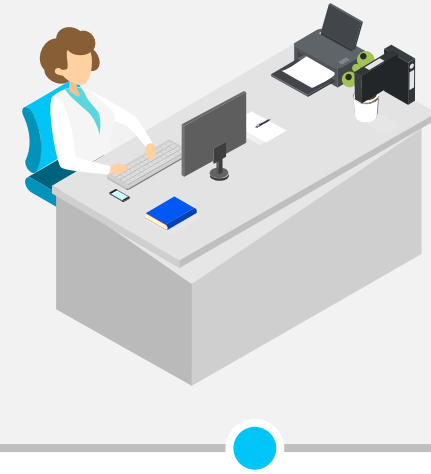
The Referring Source

- Easy referral via online portal, email, fax, call
- Clinical pharmacy team reviews all medications
- Follow-up and collaboration with Centennial



The Patient

- Medications synchronized to one day and delivered in 7-, 14-, or 28-day increments
- Easy medication packaging
- Updated medication list provided with each delivery
- Streamlined copayment options



The Care Team

- One point of contact regarding medications
- Confidence in pharmacy care

THE DATA

Primary: Medicare Advantage Plan
Secondary:

Sync Start Date:
Sync Status: Enrolled

Drug	Compliance				
	Gap	Median	Average	Latest	History
Insulin Response Enhancers – Thiazolidinediones (PPAR-gamma) • Pioglitazone Hcl 15 Mg Tablet –	0	100%	102%	100%	
Angiotensin II Receptor Blockers (ARBs) • Losartan Pot Tab 100mg –	0	100%	102%	100%	
Antihyperlipidemic – HMG CoA Reductase Inhibitors (statins) • Pravastatin 40mg Tab –	0	100%	102%	100%	
Asthma Therapy – Inhaled Corticosteroids (Glucocorticoids) • Flovent Disk Aer 250mcg –	0	107%	126%	107%	
Cardiac Selective Beta Blocker-Thiazide Diuretic and Related • Bisoprol/Hctz Tab 5-6.25mg –	0	100%	102%	100%	
Calcium Channel Blockers – Dihydropyridines • Amlodipine Besylate 10 Mg Tab –	0	100%	102%	100%	
Platelet Aggregation Inhibitors – Salicylates • Asa Low Dose 81mg Ec Tab –	0	100%	102%	100%	
Minerals and Electrolytes – Calcium Replacement/Vitamin D • Calcium 600-Vit D3 200 Tablet –	0	100%	102%	100%	

Other Issues:
Elderly (HRM): No High Risk Medications

ACEI/ARB: Taking
STATIN: Taking

Primary: Medicare Advantage Plan
Secondary:

Sync Start Date:
Sync Status: Enrolled

Drug	Compliance				
	Gap	Median	Average	Latest	History
Antihyperglycemic – Sulfonylurea Derivatives • Glipzide 5mg Tab –	0	90%	82%	112%	
Antihyperglycemic – Dipeptidyl Peptidase-4 (DPP-4) Inhibitors • Januvia 50 Mg Tablet –	0	90%	82%	112%	
Diuretic – Loop • Furosemide 80mg Tab –	0	122%	98%	500%	
Diuretic – Thiazides and Related • Metolazone 500mg Tab –	0	106%	110%	112%	
Antihistamines – 2 nd Generation • Levocetirizine 5 Mg Tablet –	0	106%	110%	112%	
Gastric Acid Secretion Reducing Agents – Proton Pump Inhibitors • Dexilant 60mg –	0	106%	110%	112%	
Vitamins – D Derivatives • Vitamin D 2000iu Tab –	0	106%	110%	112%	
Minerals and Electrolytes – Iron • Ferrous Sulfate 325 Mg Tablet –	0	106%	110%	112%	
Beta Blockers Cardiac Selective • Metoprolol 25mg –	0	90%	82%	112%	
Antidepressant – Serotonin-2 Antagonist-Reuptake Inhibitors • Trazodone 50mg Tab –	0	100%	106%	112%	
Dermatological – Glucocorticoid • Triamcinolon 0.1% Cre –	0	47%	47%	47%	
Calcium Channel Blockers – Benzothiazepines • Diltiazem Er 240 Mg Capsule –	0	106%	110%	112%	
Diuretic – Aldosterone Receptor Antagonist, Non-selective • Spironolactone 25 Mg Tablet –	0	106%	110%	112%	
Minerals and Electrolytes – Potassium, Oral • Pot Chloride 10meq Cr Tab –	0	140%	124%	112%	
Platelet Aggregation Inhibitors – Salicylates • Asa Low Dose 81mg Ec Tab –	0	106%	110%	112%	
Rifamycins and Related Derivative Antibiotics • Xifaxan 550mg Tabs –	0	112%	111%	112%	
Thyroid Hormones – Synthetic T4 (Thyroxine) • Synthroid 100mcg Tab –	0	90%	82%	112%	

Other Issues:
Elderly (HRM): No High Risk Medications

ACEI/ARB: Not Taking
STATIN: Not Taking

THE DATA



Patient A, November 2020

Patient Risk Score  96 – VH (Very High Risk)

Last Update: 11/8/2020

Hospitalization Patient Risks

30 Day Hospitalization  Very High Risk for hospitalization within next 30 days

12 Month Hospitalization  Very High Risk for hospitalization within next 12 months

Drug Therapy Problems

Therapeutic DTP  Very High Therapeutic consideration-related drug therapy problem

Adherence DTP  Very High Adherence-related therapy problem

Discrepancy DTP  Very High Discrepancy-related therapy problem



Patient A, July 2021

Patient Risk Score  21 – VL (Very Low Risk)

Last Update: 7/8/2021

Hospitalization Patient Risks

30 Day Hospitalization  Very Low Risk for hospitalization within next 30 days

12 Month Hospitalization  Low Risk for hospitalization within next 12 months

Drug Therapy Problems

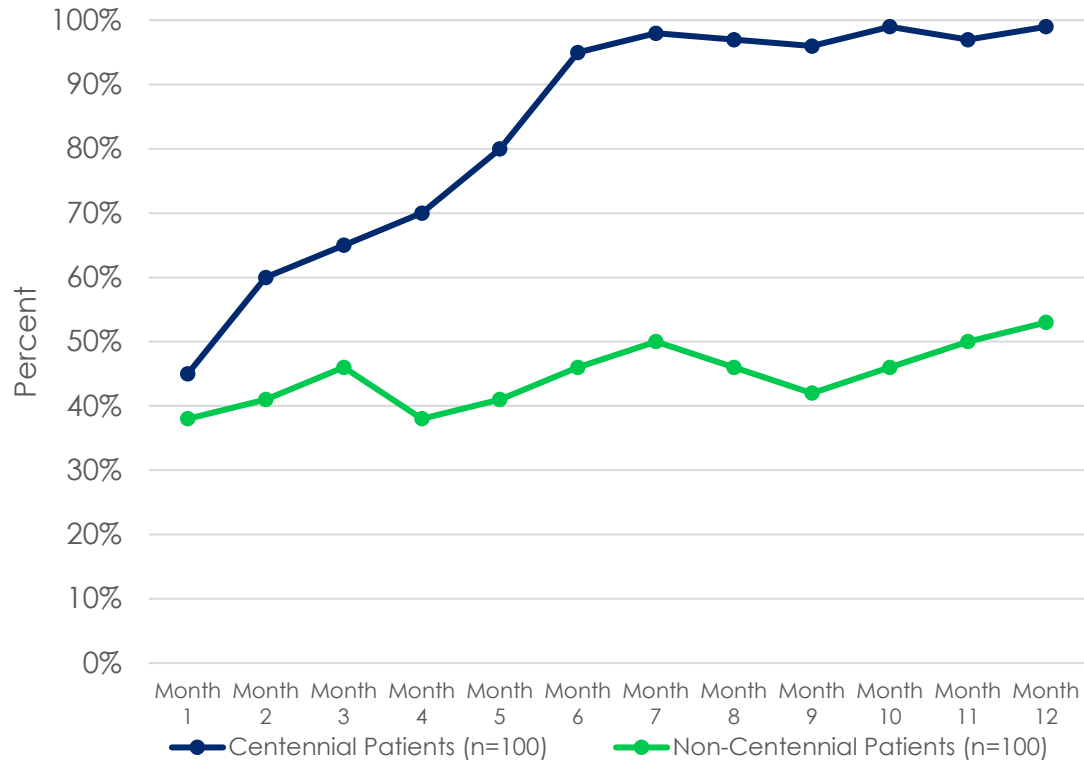
Therapeutic DTP  Very Low Therapeutic consideration-related drug therapy problem

Adherence DTP  Very Low Adherence-related therapy problem

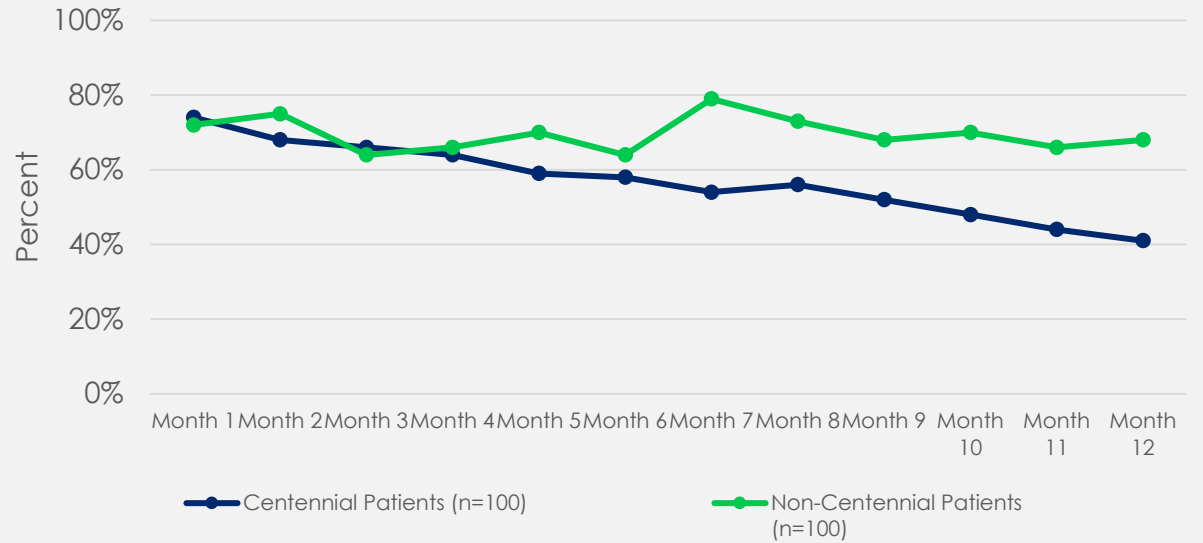
Discrepancy DTP  Very Low Discrepancy-related therapy problem

THE DATA

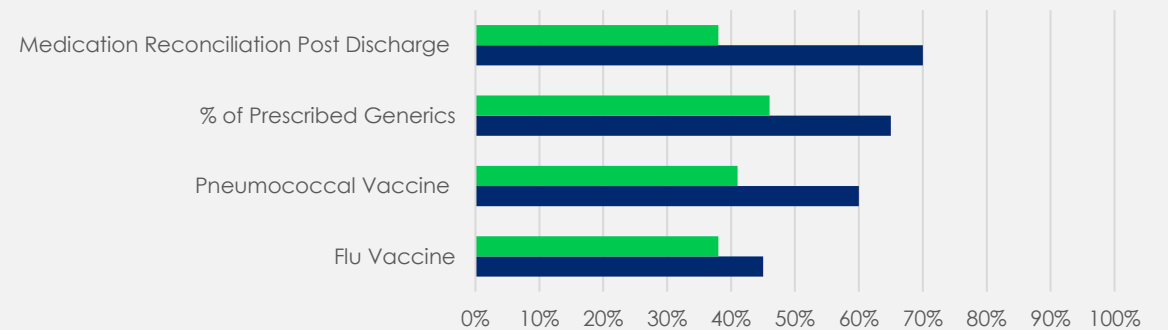
Medication Adherence February 2017 – February 2018



Re-Hospitalizations February 2017 – February 2018



PCP Measured Achievements



n=100 Medicare Advantage Patients Over 1 Year

THE OUTCOMES

EQIPP Star Ratings

Name of Measure	Performance Score	State Average
Cholesterol PDC	95.9%	90.7%
Diabetes PDC	94.3%	90.4%
RASA PDC	93.6%	90.9%
Statin Use in Diabetes	90.9%	77.1%
Polypharmacy: Use of Multiple Anticholinergic Medications in Older Adults	0%	7.1%
Polypharmacy: Use of Multiple CNS-Active Medications in Older Adults	0%	5.2%



THE CHRONICALLY ILL AND AGING IN PLACE NEED CENTENNIAL



Centennial Pharmacy Services is the gold standard of pharmacy care for providers, payors, and patients

Let's better patient care, together.



THANK YOU

CENTENNIAL PHARMACY SERVICES
HELLO@CENTENNIALPHARMACY.COM